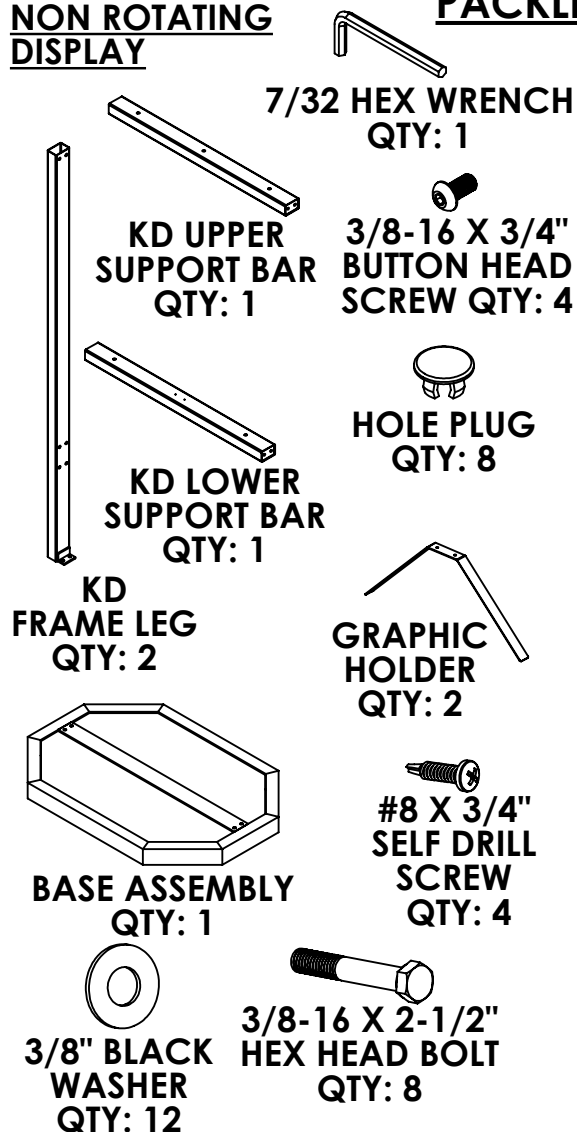


## NON ROTATING DISPLAY



ONLY USE THESE ITEMS IF THE DISPLAY WILL **NOT** ROTATE



TOOLS NEEDED: 7/16 & 9/16 WRENCH AND PHILIPS SCREWDRIVER

## PACKLIST/INSTRUCTIONS FOR KD NON ROTATING DISPLAY

**DO NOT TIGHTEN FASTENERS UNTIL COMPLETELY ASSEMBLED**

**STEP 1:**

ATTACH KD FRAME LEGS TO TOP OF BASE ASSEMBLY USING [4] 3/8-16 X 2 1/2" SCREWS AND [4] 3/8" WASHERS.

**STEP 2:**

ATTACH KD LOWER SUPPORT BAR TO KD FRAME LEG USING [4] 3/8-16 X 2 1/2" BOLTS AND [4] 3/8" WASHERS. 2 SETS OF HOLES.

**USE UPPER SET OF HOLES FOR NON ROTATING DISPLAY. OR USE BOTTOM HOLES FOR ROTATING DISPLAY.**

**STEP 3:**

ATTACH KD UPPER SUPPORT BAR TO KD FRAME LEG USING [4] 3/8-16 X 3/4" BH BOLTS AND [4] 3/8" WASHERS.

**STEP 4:**

FOR ROTATING DISPLAY ATTACH TOP PIN TO KD UPPER SUPPORT BAR USING [2] #10 X 3/4" SCREWS.

**STEP 5:**

ATTACH [2] GRAPHIC HOLDERS TO BOTTOM SIDE OF KD LOWER SUPPORT BAR USING [4] #8 X 3/4" SELF DRILLING SCREWS. HOLES PREDRILLED FOR EASY ALIGNMENT.

**STEP 6 (IF NON ROTATING):**

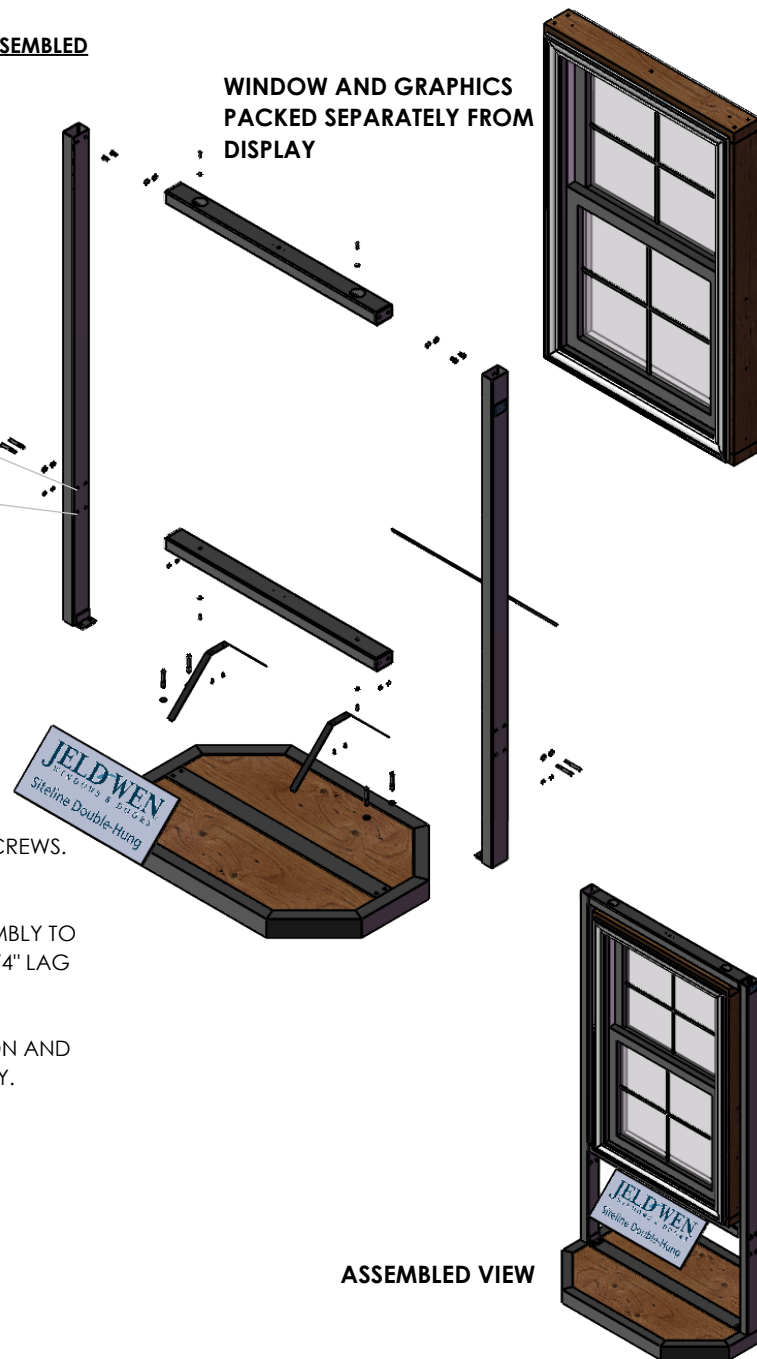
FOR NON ROTATING DISPLAY ATTACH BUCK ASSEMBLY TO KD UPPER AND LOWER SUPPORT BARS USING [4] 1/4" LAG SCREWS AND [4] 1/4" WASHERS.

**STEP 6 (IF ROTATING):**

FOR OPTIONAL ROTATING DISPLAY SEE INSTRUCTION AND PACKLIST IN ROTATING KIT PURCHASED SEPARATELY.

**STEP 7:**

TAPE GRAPHIC PANELS TO GRAPHIC SUPPORTS.



REV. 2  
3/15/18

